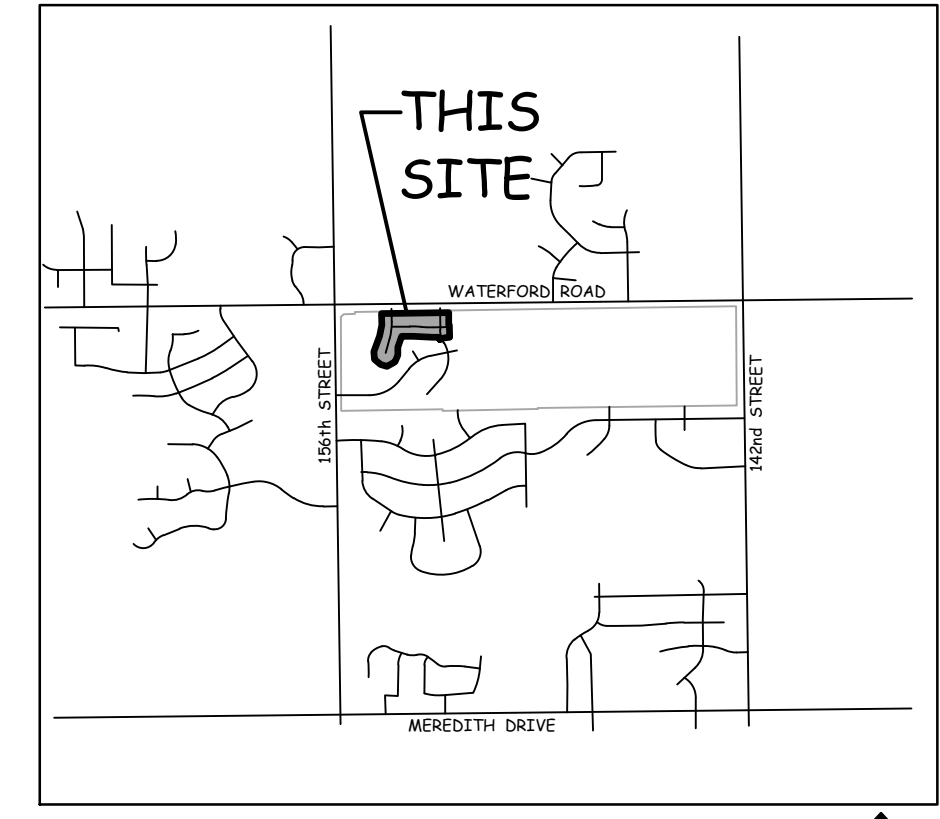
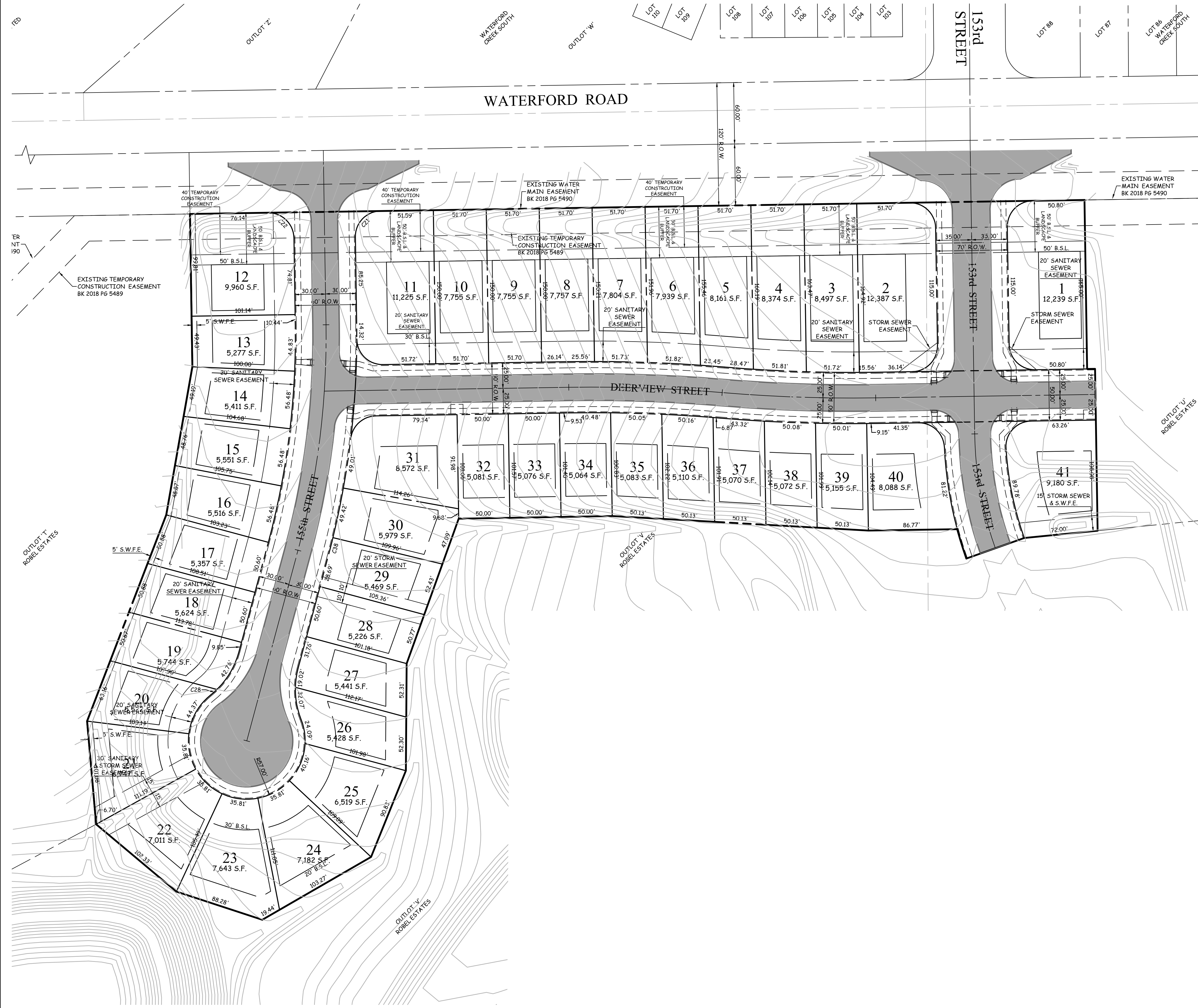


SALES PLAT FOR: BARRETT'S ESTATE NORTH PLAT 1 URBANDALE, IOWA



VICINITY SKETCH
NORTH SCALE: 1"=2,500'



LOT NO.	ADDRESS	LOT WIDTH	BUILDABLE WIDTH	BUILDABLE AREA (SQ FT)	FRONT SETBACK	SIDE SETBACK	REAR SETBACK	BASEMENT	M.B.E.	M.O.E.
1	00000 DEERVIEW STREET	75.8'	40.8'	3,468	30'	5'	50'	STD	181.00	
2	00000 153rd STREET	165.00'	85.0'							
3	00000 DEERVIEW STREET	76.7'	41.7'	3,544	30'	5'	50'	STD	177.30	
4	00000 DEERVIEW STREET	164.9'	84.9'							
5	00000 DEERVIEW STREET	51.7'	41.7'	3,518	30'	5'	50'	STD	176.20	
6	00000 DEERVIEW STREET	51.7'	41.7'	3,417	30'	5'	50'	STD	175.00	
7	00000 DEERVIEW STREET	51.7'	41.7'	3,241	30'	5'	50'	STD	173.85	
8	00000 DEERVIEW STREET	51.7'	41.7'	3,064	30'	5'	50'	STD	172.00	
9	00000 DEERVIEW STREET	51.7'	41.7'	2,956	30'	5'	50'	STD	170.50	
10	00000 DEERVIEW STREET	51.7'	41.7'	2,920	30'	5'	50'	STD	169.00	
11	00000 DEERVIEW STREET	51.7'	41.7'	2,919	30'	5'	50'	STD	167.30	
12	00000 DEERVIEW STREET	51.7'	41.7'	2,919	30'	5'	50'	STD	165.80	
13	00000 DEERVIEW STREET	76.6'	41.6'	2,912	30'	5'	20'	STD	164.00	
14	00000 155th STREET	150.0'	70.0'							
15	00000 155th STREET	99.8'	44.8'	2,291	30'	5'	20'	STD	162.00	
16	00000 155th STREET	50.5'	40.6'	2,139	30'	5'	20'	STD	161.20	
17	00000 155th STREET	50.5'	40.6'	2,228	30'	5'	20'	STD	160.40	
18	00000 155th STREET	50.1'	40.2'	2,347	30'	5'	20'	STD	159.60	
19	00000 155th STREET	50.1'	40.3'	2,317	30'	5'	20'	STD	158.70	
20	00000 155th STREET	50.6'	40.6'	2,264	30'	5'	20'	DL	157.75	
21	00000 155th STREET	50.6'	40.6'	2,478	30'	5'	20'	DL	156.35	
22	00000 155th STREET	50.6'	40.6'	2,528	30'	5'	20'	DL/WO	155.00	
23	00000 155th STREET	53.1'	43.0'	2,177	30'	5'	20'	WO	154.00	
24	00000 155th STREET	56.5'	35.4'	2,407	30'	5'	20'	WO	152.50	
25	00000 155th STREET	56.5'	35.4'	2,607	30'	5'	20'	WO	152.50	
26	00000 155th STREET	56.5'	46.0'	3,686	30'	5'	20'	DL	153.50	
27	00000 155th STREET	56.5'	46.0'	3,307	30'	5'	20'	DL	153.50	
28	00000 155th STREET	56.0'	45.6'	2,842	30'	5'	20'	STD	154.00	
29	00000 155th STREET	50.6'	40.6'	2,149	30'	5'	20'	STD	155.00	
30	00000 155th STREET	50.6'	40.6'	2,311	30'	5'	20'	STD	156.60	
31	00000 155th STREET	50.6'	35.6'	1,887	30'	5'	20'	STD	157.75	
32	00000 155th STREET	50.2'	35.2'	2,074	30'	5'	20'	STD	159.30	
33	00000 155th STREET	51.2'	41.1'	2,724	30'	5'	20'	STD	160.00	
34	00000 155th STREET	76.7'	41.4'	2,751	30'	5'	20'	STD	160.80	
35	00000 DEERVIEW STREET	104.3'	54.9'							
36	00000 DEERVIEW STREET	50.0'	40.0'	2,065	30'	5'	20'	STD	167.40	
37	00000 DEERVIEW STREET	50.0'	40.0'	2,061	30'	5'	20'	STD	168.90	
38	00000 DEERVIEW STREET	50.0'	40.0'	2,052	30'	5'	20'	STD	170.40	
39	00000 DEERVIEW STREET	50.0'	40.0'	2,064	30'	5'	20'	STD	172.00	
40	00000 DEERVIEW STREET	50.0'	40.0'	2,083	30'	5'	20'	STD	173.40	
41	00000 DEERVIEW STREET	50.0'	40.0'	2,048	30'	5'	20'	STD	175.00	
42	00000 DEERVIEW STREET	50.0'	40.0'	2,052	30'	5'	20'	STD	176.20	
43	00000 DEERVIEW STREET	50.0'	40.0'	2,121	30'	5'	20'	STD	177.30	
44	00000 DEERVIEW STREET	75.7'	40.6'							
45	00000 153rd STREET	102.0'	54.4'	2,349	30'	5'	20'	STD	178.50	
46	00000 DEERVIEW STREET	88.0'	42.2'							
47	00000 153rd STREET	108.1'	58.4'	2,947	30'	5'	20'	WO	181.80	187.62

STD STANDARD LOT
 WO WALKOUT
 DL DAYLIGHT
 MOE MINIMUM OPENING ELEVATION
 MBE MINIMUM BASEMENT ELEVATION

COOPER CRAWFORD & ASSOCIATES, L.L.C. CIVIL ENGINEERS

475 S. 50th STREET, SUITE 800, WEST DES MOINES, IOWA 50265
 PHONE: (515) 224-1344 FAX: (515) 224-1345

DATE: 8-1-2019
 REVISIONS:
 SCALE: 1"=50'
 APPROVED: --- INITIALS: --- AS-BUILT: ---

SALES PLAT
Barrett's Estate North Plat 1

JOB NUMBER
**CC
2188**

SHEET
1 OF 1

