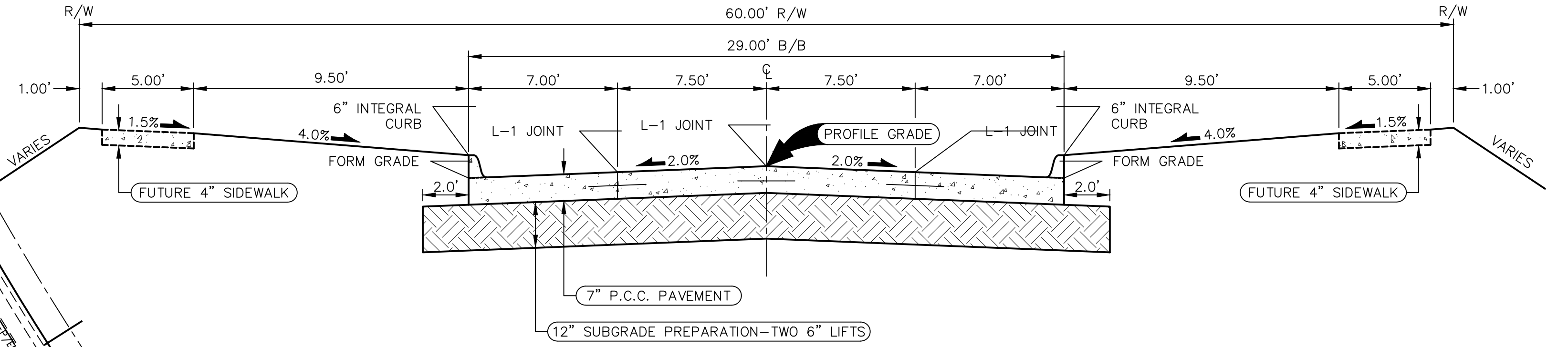
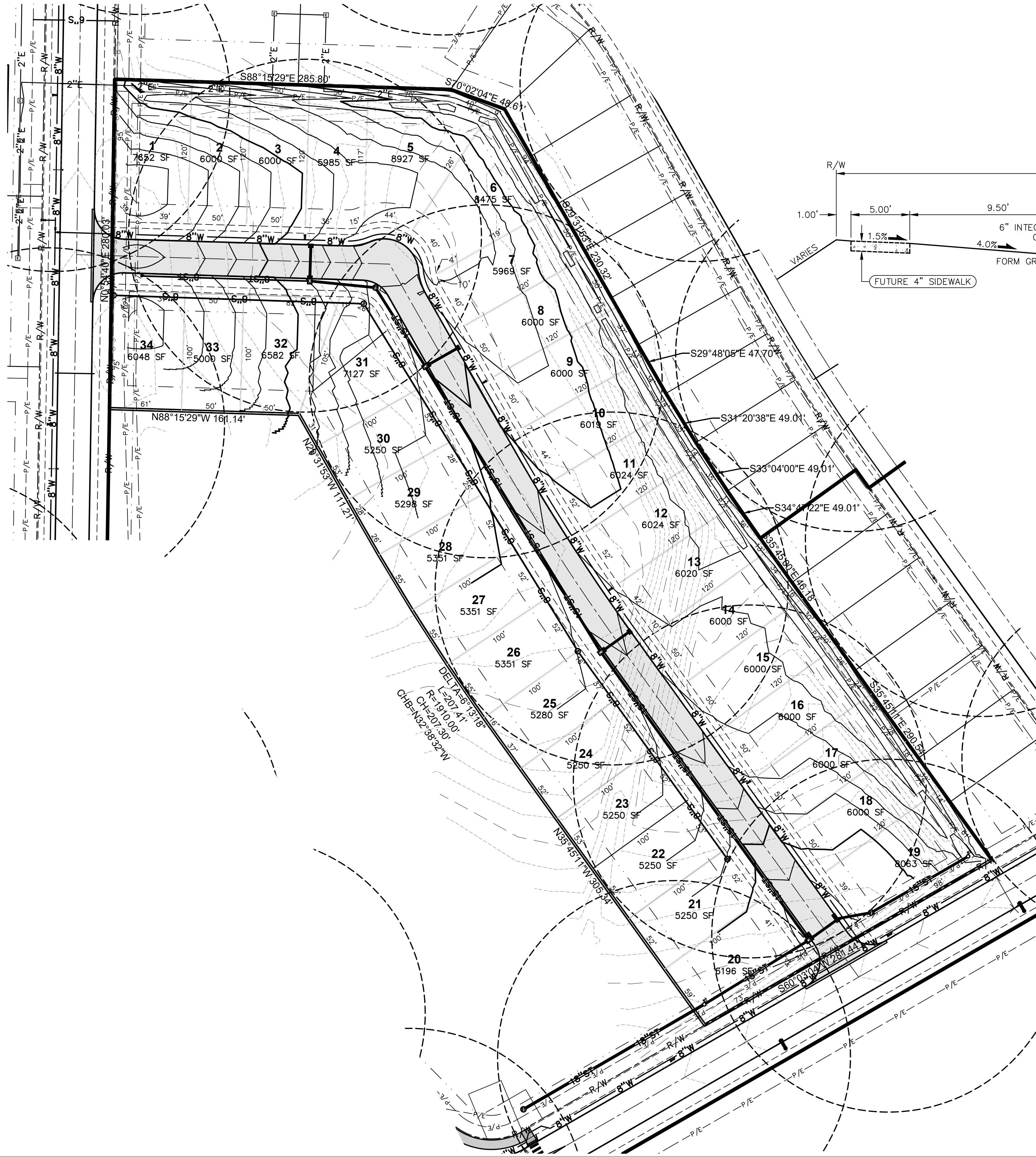


SOUTHBRIDGE PLAT 5

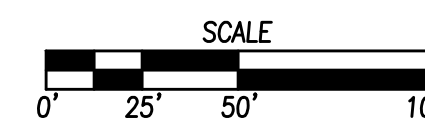
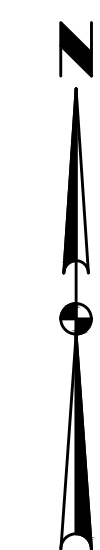
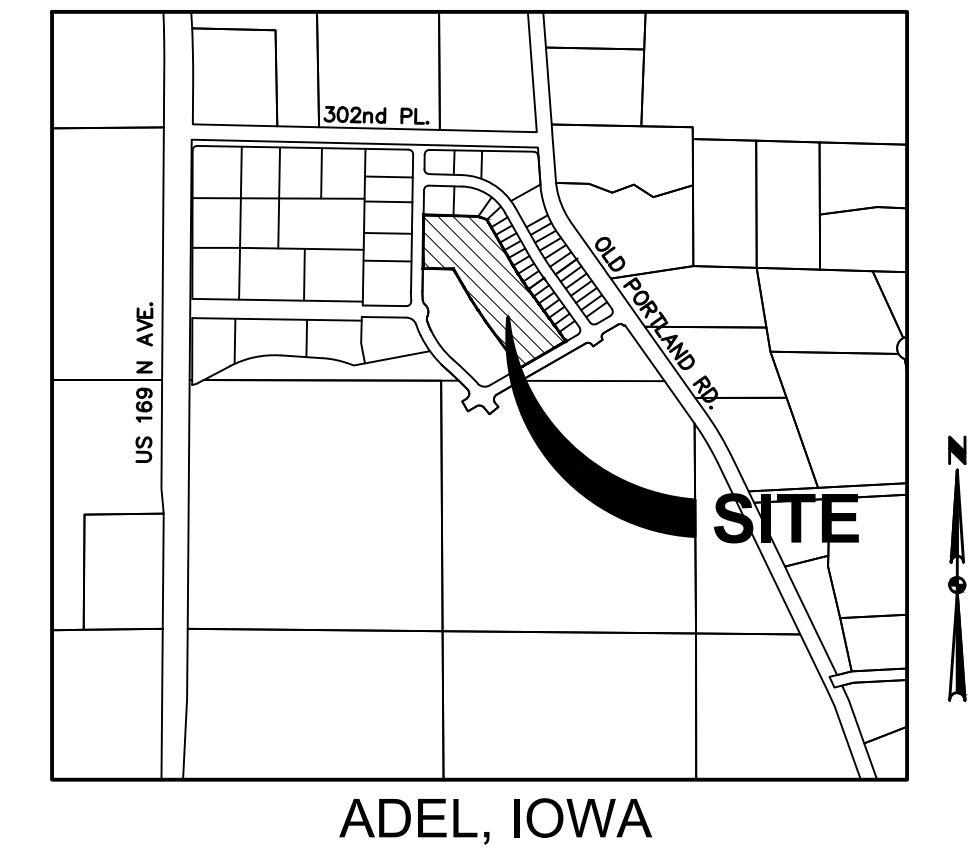
PRELIMINARY PLAT



TYPICAL SECTION -29' B/B P.C.C. ROADWAY WITH 60' ROW
NOT TO SCALE

PRELIMINARY PLAT DESCRIPTION

VICINITY MAP (1"=1000')



OWNER/DEVELOPER

CRAMER & ASSOCIATES
3100 BROOKSIDE DRIVE
GRIMES, IA 50111
CONTACT: ROBERT CRAMER

ENGINEER / SURVEYOR

CIVIL DESIGN ADVANTAGE, LLC
3405 S.E. CROSSROADS DRIVE, SUITE G
GRIMES, IOWA 50111
PH: 515-369-4400
CONTACT: DOUG MANDERNACH

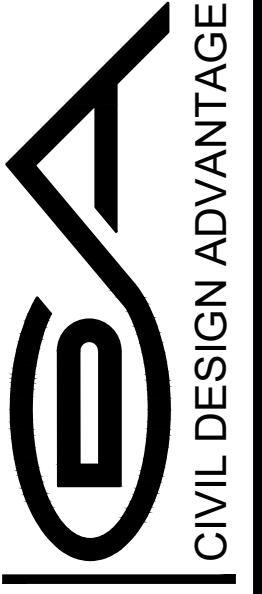
ZONING

EXISTING: SOUTHBRIDGE PUD
PROPOSED: SOUTHBRIDGE PUD

FILE: H:\2020\208432\208432-008432-PRELIMINARY PLATING COMMENT: ENDS
PLOTTED BY: DOUG MANDERNACH DATE PLOTTED: 8/23/2020 4:25 PM

DATE	08/28/20
REVISIONS	
PREPARED	

3405 S.E. CROSSROADS DRIVE, SUITE G
GRIMES, IOWA 50111
PHONE: (515) 369-4400 FAX: (515) 369-4410



ADEL, IOWA

SOUTHBRIDGE PLAT 5

PRELIMINARY PLAT